

2024 PRODUCT CATALOG



Equipmentconnectionsllc.com



BUILT TO BE BADASS

Brush Mower



60"

\$4,800

72"

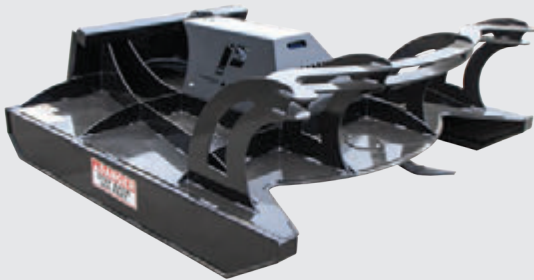
\$5,000

80"

\$5,200

- Rated for trees and saplings up to 3" in diameter
- Full-length 3/8" runners
- Standard hydraulic flow (15-25 gallons per minute)
- 2 free-spinning blades

Direct Drive Mower



72"

\$6,700

80"

\$7,100

- Rated for trees up to 8" diameter trees
- Massive 417 lb round flywheel
- 4 free-spinning blades
- Standard hydraulic flow

Tree Puller w/ Push Bar



\$1,800

- Cylinder cover
- Remove trees up to 12" in diameter
- Jaws opening 17"
- 4 full-length gussets
- Perfect for T-posts or fence posts

Cyclops Solo Grapple



Solo 48"

\$2,150

Solo 54"

\$2,200

- Bolt-on removable side plates
- 3/8" tines, 50 tines, 3" spacing
- Greasable pivot points
- 1/2" serrated cutting edge
- All grade 50 steel



320-226-5397

See demos on

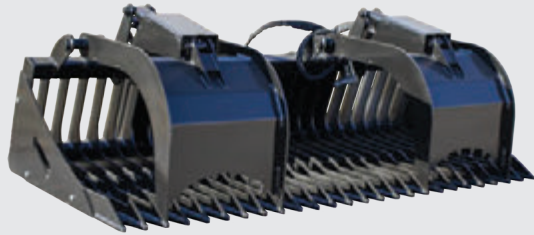




Standard Rock + Brush Grapple

62"	68"	74"
\$2,200	\$2,250	\$2,300

- 1/4" tines, 3" spacing
- Bolt-on removable side plates
- Cylinder covers
- Independent grapples
- All grade 50 steel
- 1/2" cutting edge



Heavy-Duty Rock + Brush Grapple

62"	68"	74"	78"	84"
\$2,800	\$2,850	\$2,900	\$2,950	\$3,000

- 3/8" tines, 3" spacing
- Bolt-on removable side plates
- Bolt-on cylinder covers
- Solid grapples
- All grade 50 steel



Commercial Rock + Brush Grapple

68"	74"	78"	84"
\$3,200	\$3,250	\$3,300	\$3,350

- 3/8" tines, 3" spacing
- Bolt-on removable side plates
- Reinforced outside tines
- Grapple stops
- All grade 50 steel



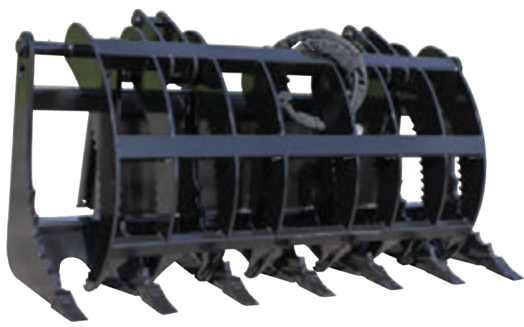
Root Grapple

68"	76"	83"
\$3,200	\$3,275	\$3,350

- 1/2" Grade 50 tines with 6" spacing
- Independent grapples
- Visibility cutouts
- Grapple stops
- All grade 50 steel

320-226-5397





Clam Grapple

66"

\$3,800

74"

\$4,000

86"

\$4,300

- 3/4" tines with replaceable digging teeth
- Massive 51" opening
- Grapple stops
- Single grapple
- All grade 50 steel



Dual Clam Grapple

66"

\$3,800

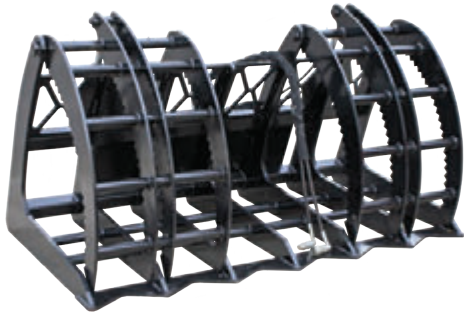
74"

\$4,000

86"

\$4,300

- 3/4" tines with replaceable digging teeth
- Massive 51" opening
- Grapple stops
- Independent grapples
- All grade 50 steel



Forestry Grapple

76"

\$4,000

84"

\$4,300

- Independent grapples
- Massive 52 1/2" grapple opening
- 3/4" hardened tines with 12" tine spacing
- All grade 50 steel



Dirt Bucket Grapple

68"

\$3,050

72"

\$3,100

78"

\$3,150

84"

\$3,200

- 1/4" bucket material
- 1/2" fully welded cutting edge
- Bolt-on side plates
- Independent grapples
- Optional bolt-on cutting edge

320-226-5397

See demos on





Soil Conditioner

72"

\$7,400

84"

\$7,600

wiring harness

\$750

- 10" rotating drum w/ welded carbide teeth
- Bidirectional motor
- Angles 25 degrees both directions
- Manual option available
- Floating quick attach plate



Tiller

72"

\$4,000

84"

\$4,200

- Four swing-away blades per spindle
- Bi-directional motor / Bi-directional tine rotation
- Standard hydraulic flow (15-25 gallons per minute)
- Adjustable 6" tilling depth



Backhoe

6-1/2'

w/ 12" bucket

\$2,600

8-1/2'

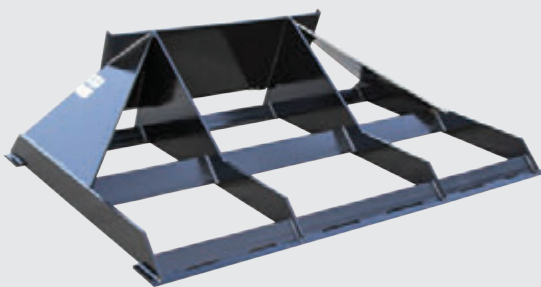
w/ 12" bucket

\$2,900

optional thumb add.

\$350

- 12", 18" & 24" wide bucket options w/ replaceable digging teeth
- 1" Grade 50 steel gussets
- Mechanical thumb option available
- Recessed cylinder protection



Land Leveler

72"

\$1,575

78"

\$1,625

84"

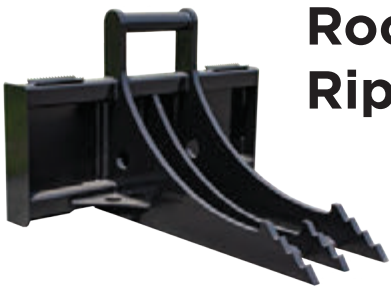
\$1,700

- Use for back dragging, grading, or sod peeling
- Level and grade landscape
- Multi-directional tool with cutting edge on front + back

320-226-5397

See demos on





Rock + Stump Ripper

\$1,600

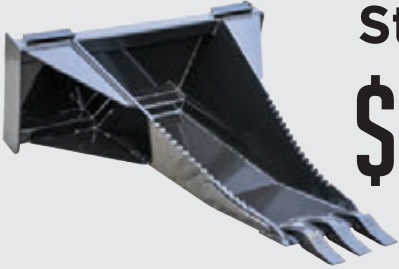
- 1" Grade 50 tines (triple gusset design)
- Recessed middle tine



Rock + Stump Ripper Grapple

\$2,300

- 1" Grade 50 tines (triple gusset design)
- 1/2" cutting edge gusset support
- Grapple stops



Stump Bucket

\$1,400

- Replaceable digging/excavator performance teeth
- Massive 63" length for longer digs
- 2 full-length wear strips on the bottom of bucket
- All grade 50 steel



Stump Bucket + Grapple

\$2,000

- Grapple stops
- Massive 53" grapple opening
- Replaceable digging/excavator teeth
- 2 full-length wear strips on the bottom
- All grade 50 steel



Log Splitter

Single Wedge

\$3,400

4-Way

\$3,500

Features: 5/8" I Beam
5"x30" Cylinder 30 Ton



WE FINANCE



We have partnered with **Synchrony Bank** to offer quick and easy financing options, helping you get the equipment you need at affordable monthly payments. Get **INSTANT APPROVAL** today with no hard credit pull.



with every purchase!



320-226-5397

See demos on





Concrete Hopper

\$1,950

- 1/2 yard capacity
- 36" removable material chute
- Hydraulic gate



Auger

Drive

\$2,600

- Self-centering frame
- 2" hex drive unit
- Planetary drive

Auger Bits

- 9" : \$500
- 12" : \$575
- 15" : \$750
- 18" : \$875
- 24" : 1,100
- 30" : \$1,400



Telescopic Boom

\$3,000

- Operating weight: 485 lbs
- Length fully extended: 22.73 ft
- Rated fully extended: 350 lbs (horizontal)



Power Sweeper

6'

\$5,500

7'

\$5,700

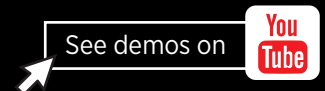
wiring harness

\$750

- 32" stainless or poly bristles
- Standard flow up to 15-25 gpm
- Hydraulic angle



320-226-5397

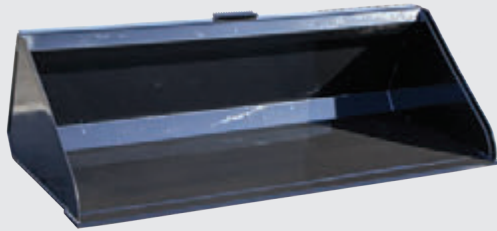




4-in-1 Bucket

72"	78"	84"
\$3,900	\$4,150	\$4,350

- Reinforced bucket and sides
- 3/4" bolt-on reversible cutting edge
- Optional bolt-on reversible bucket cutting edge



Low-Profile Dirt Bucket

68"	72"	78"	84"
\$1,250	\$1,300	\$1,350	\$1,400

- 3/16" or 1/4" bucket material available
- 1/2" fully welded on cutting edge
- 22" high + 32" deep
- Optional bolt-on reversible cutting edge



Super Duty Tooth Bucket

68"	72"	78"	84"
\$1,850	\$1,900	\$1,950	\$2,000

- 1/4" bucket material
- 1/2" fully welded on cutting edge
- Replaceable digging teeth



Rock Bucket

62"	68"	74"	78"	84"
\$1,400	\$1,450	\$1,500	\$1,550	\$1,600

- 3/8" tines, 3" spacing
- Bolt-on removable side plates
- 1/2" serrated cutting edge
- All grade 50 steel



320-226-5397





Pallet Forks

4'x4'

\$1,100

4'x5'

5'x4'

\$1,200

5'x5'

\$1,300

- Professionally milled 1 1/4" x 3" slider bars
- 5,500 lb rated forks
- Walk-through carriage



Pallet Fork Grapple

\$2,000

- All pivot points are greasable
- Universal quick attach plates
- 5,500 lb rated forks



Hydraulic Sliding Pallet Forks

4'x4'

\$2,000

4'x5'

5'x4'

\$2,150

5'x5'

\$2,300

- Hydraulic adjustable forks
- 5,500 lb rated forks
- Walk-through carriage
- Smooth 1 1/4 x 3" slider bar



Low Profile Snow Pro

7'

\$2,150

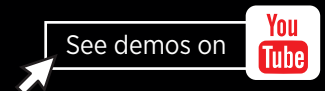
8'

\$2,300

- Height 26" + depth 52"
- 3/4" x 6" bolt-on reversible cutting edge
- Internal gusset for support



320-226-5397





Snow Blower

wiring harness

\$750

72"

\$8,600

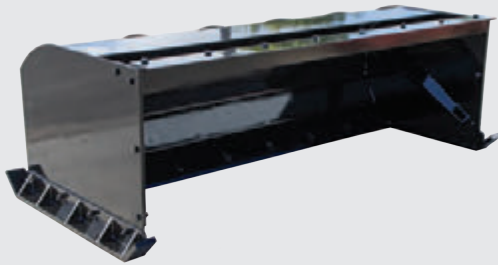
78"

\$8,780

84"

\$8,960

- 2-stage blower
- Angled paddles
- 1/2" bolt-on reversible cutting edge
- All hydraulic-driven motors



Snow Pusher

7'

\$2,100

8'

\$2,250

10'

\$2,400

- 1/2" adjustable + reversible steel cutting edge
- 3/4" Grade 50 shoes
- Optional back drag



Snow Blade

6'

\$3,000

7'

\$3,100

8'

\$3,250

- 3/4" bolt-on reversible cutting edge
- 30 degree angle hydraulic pivot
- Easily adjustable skid shoe for depth control



Snow Bucket

7'

\$2,000

8'

\$2,100

9'

\$2,250

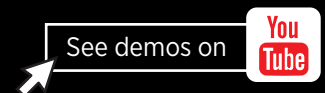
10'

\$2,400

- 36" high and 42" deep
- 3/4" bolt-on reversible cutting edge
- High volume bucket capacity
- Visibility cutouts



320-226-5397





High Capacity Grapple

7' | 8'
\$3,400 | **\$3,700**

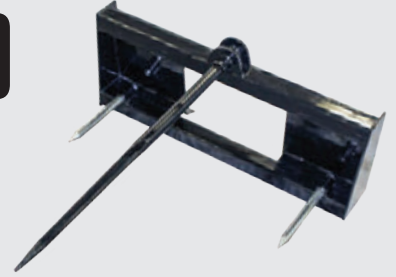
- 73" grapple opening
- 5/16" thick steel side plates
- 3/4" bolt-on reversible cutting edge
- Additional teeth available



2 Prong Bale Spear

- Used for square and round bales
- 2-39" spears

\$900



3 Prong Bale Spear

- 2-17" stabilizer spears
- 1-49" spear
- Specialized for round bales



4 Prong Bale Spear

- Used for square and round bales
- 4-39" spears

\$1,400



Quick Attach Plate

\$170 1/4 Normal Plate (QT 1/4) | **\$210** 5/16 Normal Plate (QT 5/16)

- 1/4" or 5/16" thick plate
- Solid or open available

Receiver Hitch

\$300



- Quick attach plate thickness
- 2" receiver tube, 12" long



320-226-5397

Equipmentconnectionsllc.com



EQUIPMENT CONNECTIONS LLC



TO ORDER:

Call NOW 320-226-5397



4243 County Rd 40 NW
Garfield, MN 56332

Equipment Connections LLC
2505 164th Ave NE Suite A
New London MN, 56273